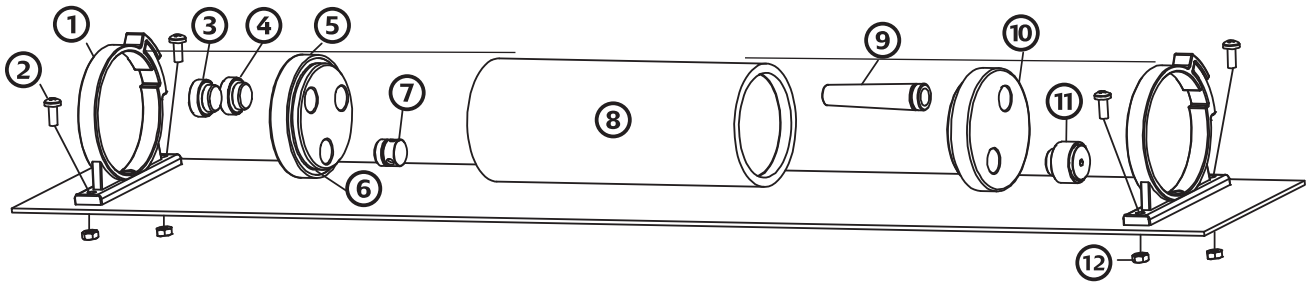




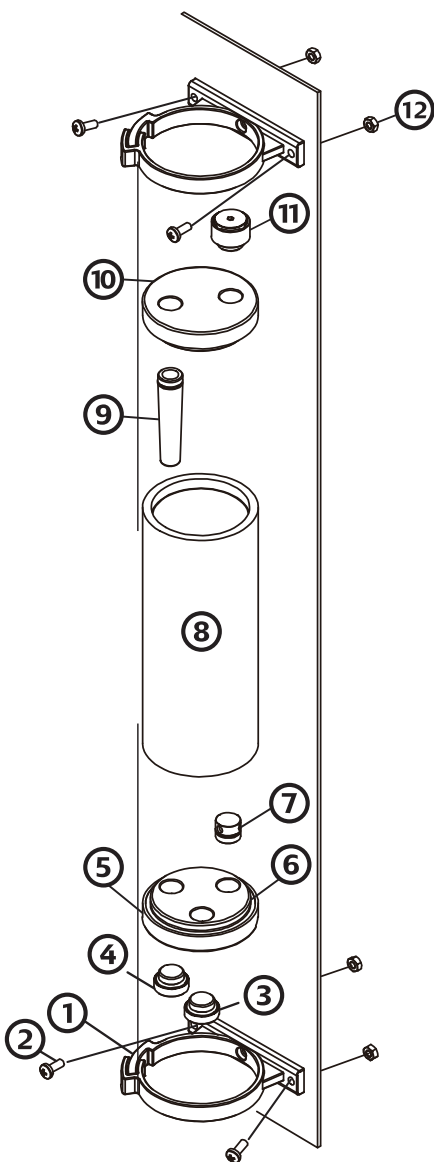
**Bitspower®**

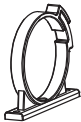







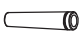



# Water Tank Z-Multi V2 Installation Guide

## Installation Guide : 1



## Installation Guide : 2



①		TANK CLAMP For Water Tank Z series	2PCS
②		Screw M4	4PCS
③		G1/4" Stop Fitting	1PCS
④		G1/4" Crystal Stop Fitting I With 5MM LED Hole	1PCS
⑤		Z-CAP II With G1/4" x3	1PCS
⑥		O-Ring For Water Tank Z Series	2PCS
⑦		G1/4" Anti-Cyclone Adapter	1PCS
⑧		Z-Tube	1PCS
⑨		G1/4" Aqua-Pipe I	1PCS
⑩		Bitspower Z-CAP III With G1/4" x2	1PCS
⑪		G1/4" AIR-Exhaust Fitting	1PCS
⑫		Nuts For M4 Screw	4PCS

### ! Important

Before fill in water, please make sure all the component be installed correctly , avoiding leaking happen and destroy the PC component.